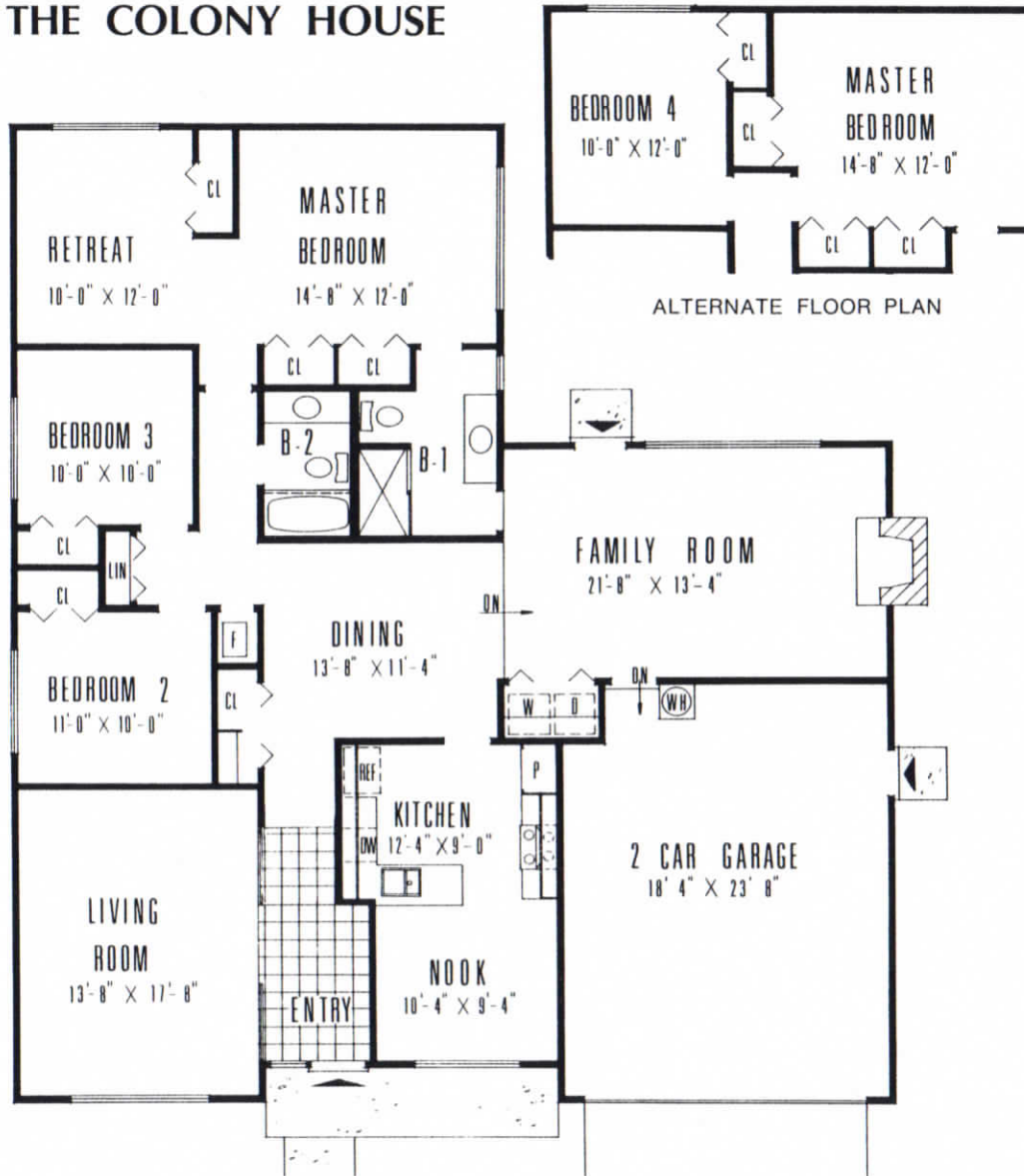


THE COLONY HOUSE



THE ACTIVITY AREA

Here's a house that puts its best foot forward the minute you enter the foyer, as your eye is drawn immediately to the open-railed living room. This room will be a pleasure to decorate, as not only are its dimensions per-

fect, but with that much unbroken wall space your furniture placement possibilities are unlimited.

The entry hall opens up into the formal dining area. Here you'll find a double duty closet which not only has hanging space for guests wraps, but has shelves for entertainment item storage.

The handsome fireplace wall is the focal point of the family room, but its most stunning feature is masses of light from the dramatic 10 foot window. The washer-dryer is hidden behind decorator louvered doors. Both family and guests will appreciate the step-saving access to the master bath.

The kitchen is truly a wife pleaser. Not only is it planned for efficiency in terms of storage and counter space, but it takes advantage of a front window view. Informal eating is not relegated to a corner of the kitchen as this large breakfast room is one of the prettiest in the house.

THE QUIET AREA

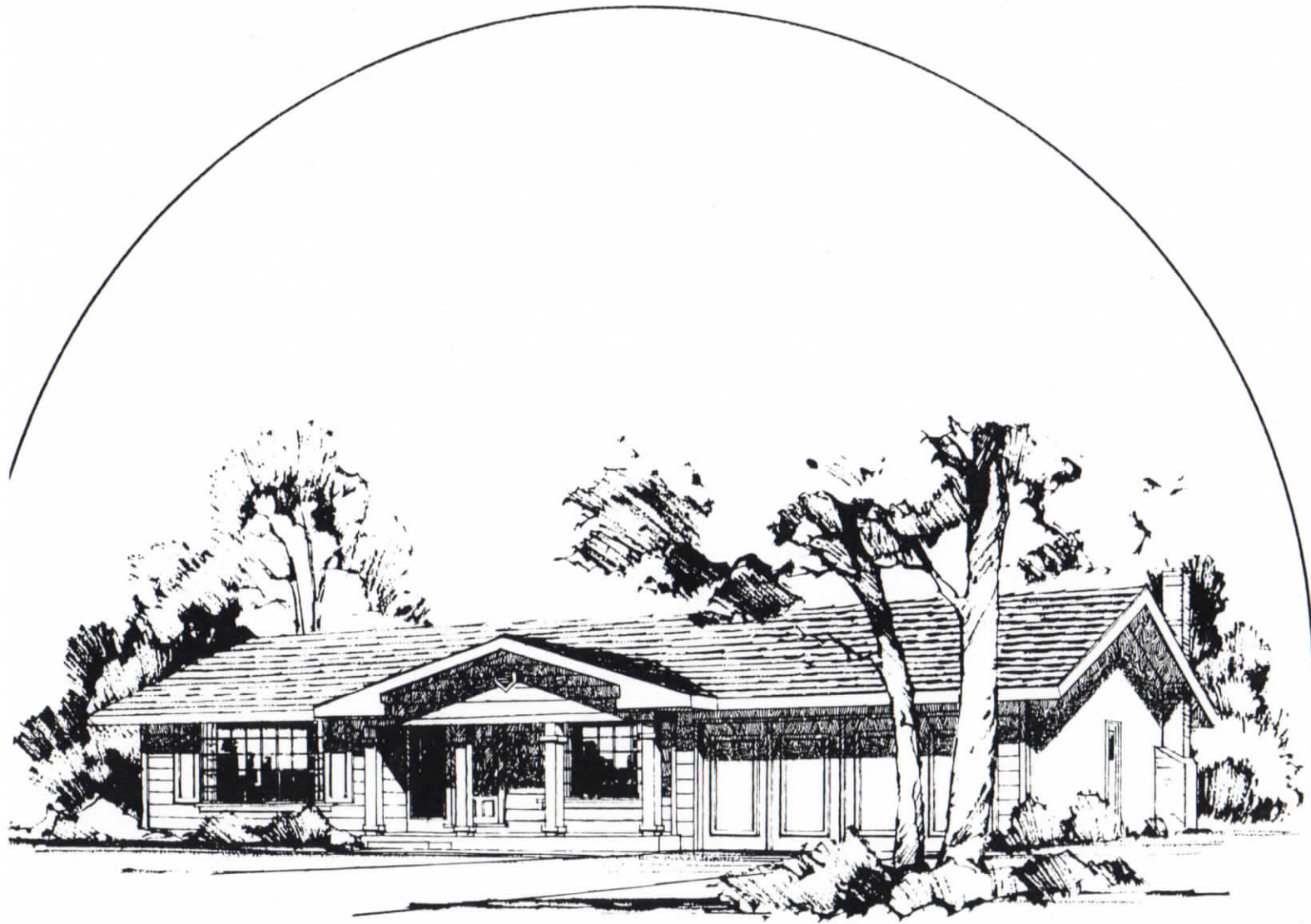
For complete privacy and maximum quiet the owners' suite is at the extreme rear of the house. Of course, it has loads of storage and its own stunning bath. There's lots of light, with an 8-foot view window overlooking the patio. The retreat is something special in its size. It's so large that should you need a fourth bedroom, it would be ideal for the youngest child.

The other two bedrooms will end family squabbles as they are just about equal in size and in storage. They share the use of the full-fashion family bath. Of course there's a five foot linen closet as well.

THIS IS A FAMILY TESTED MORRISON PLAN, JUST PERFECT FOR THE SMALLER FAMILY.



1693 Hopyard Road, Pleasanton, California 94566
Phone 581-5691 / 846-2848



THE COLONY HOUSE

Just as smart and charming as its name implies is this single-level home. It is flexible in its room arrangements (either three or four bedroom) and in the way it will adapt to any family's way and style of living.