

# bas of Pleasanton

5 bedroom / or 4 bedroom + den / 3 bath / two story home

## PLAN 3256



A



B



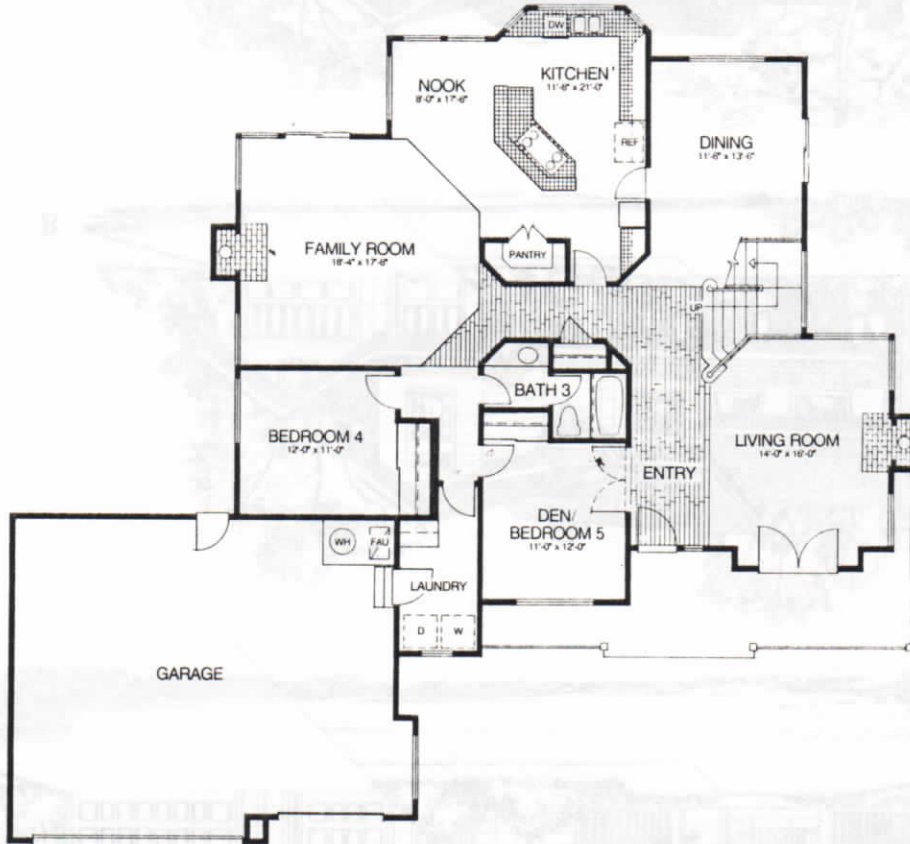
C

PLAN NUMBER INDICATES SQUARE FOOTAGE OF HOME. WINDOWS, GARAGE AND WALLS VARY WITH EXTERIOR DESIGN OF HOME.

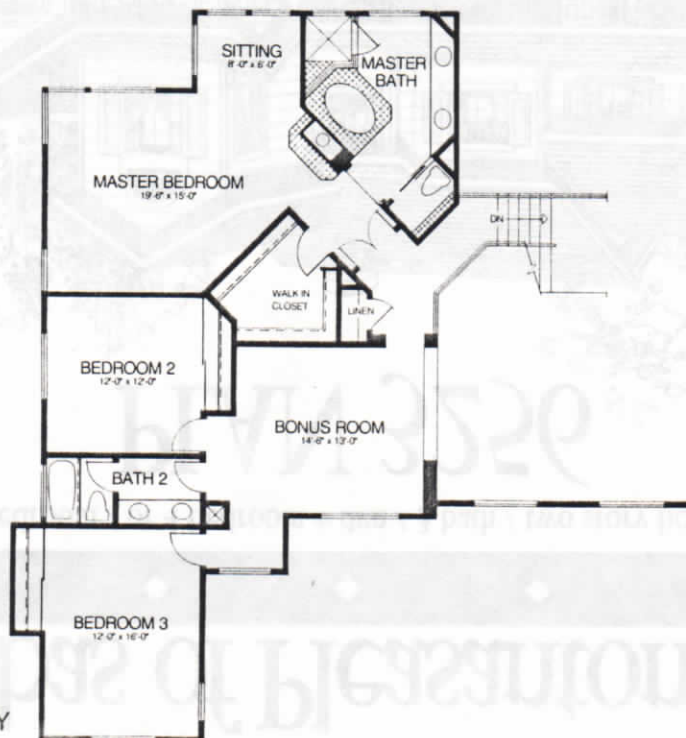
# bas of Pleasanton

5 bedroom / or 4 bedroom + den / 3 bath / two story home

## PLAN 3256



FIRST STORY



SECOND STORY

### DESIGN

Architect and Interior Design:  
Pekarek-Crandell Inc.

Due to the custom nature of bas homes, plans and specifications are subject to change without notice. Walls, windows, fireplace locations and square footage may vary, depending on the architectural styling of the house.

**bas**  
Homes, Inc.