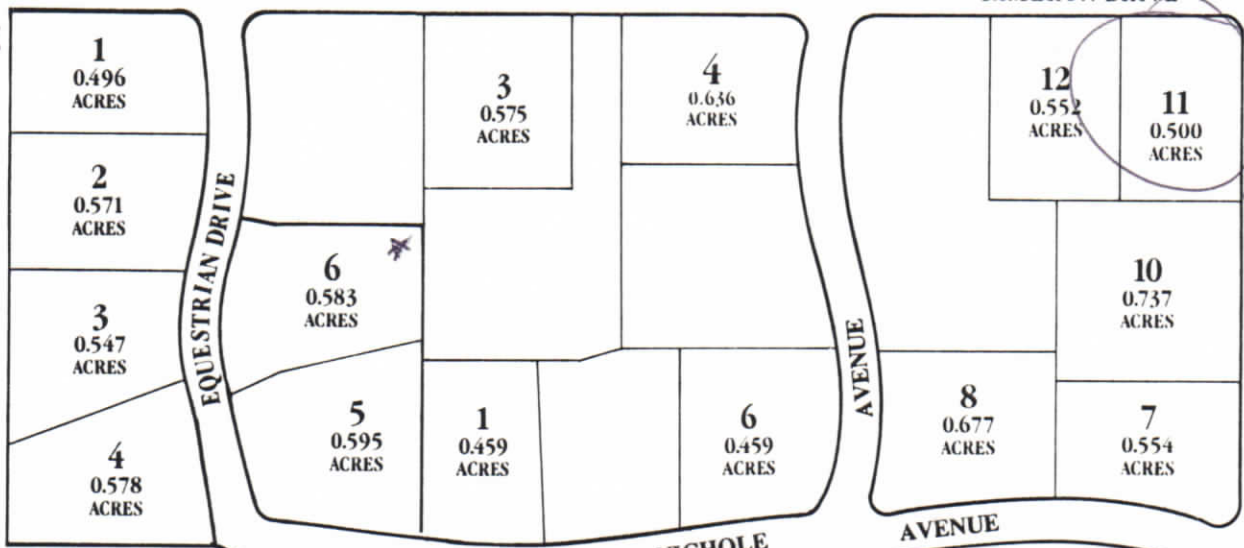
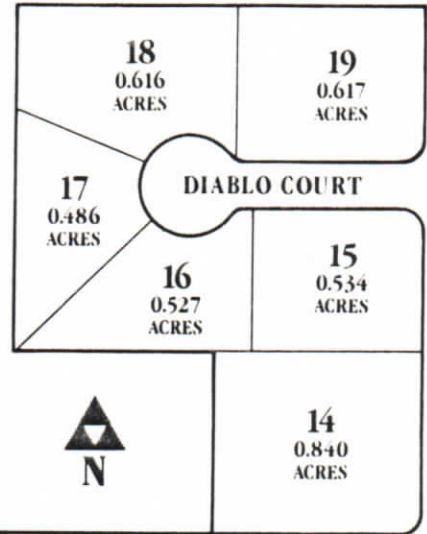


# bas of Pleasanton

## Live Where the Country Begins

bas of Pleasanton is located where the country begins, in the charming town of Pleasanton. Here, in the midst of recent progress, is a town that retains its country atmosphere. And country values.

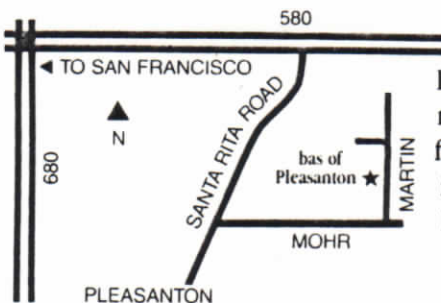
It's a friendly community that takes pride in traditions like 4th of July picnics and Memorial Day parades. Pleasanton also takes pride in its healthy local economy—anchored by a charming downtown, and bolstered by thriving new business centers.



TRACT 5445

TRACT 5746

TRACT 5446



Located at the junctions of two major freeways, and at the site of a future BART connection, Pleasanton is an integral part of the larger Bay Area region.

MOHR AVENUE