

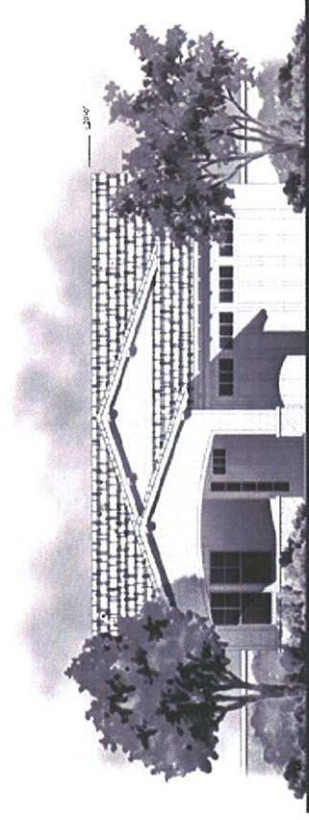


Bedroom 3 Opt. at Den/ Media

**RESIDENCE ONE (A)**  
 APPROX. 1,916 SQUARE FEET  
 2 TO 3 BEDROOMS | 2.5 BATHS | DEN | RETREAT  
 OPTIONAL BEDROOM 3 AT DEN  
 2-CAR GARAGE



**COTTAGE - C**  
 FRONT ELEVATION



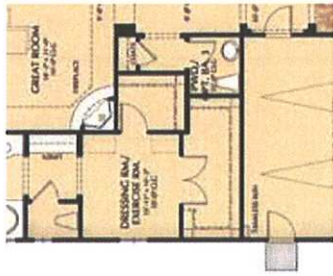
**NAPA CRAFTSMAN - D**  
 FRONT ELEVATION



**TUSCAN - A**  
 FRONT ELEVATION

## RESIDENCE ONE—PRELIMINARY FLOOR PLAN & ELEVATIONS

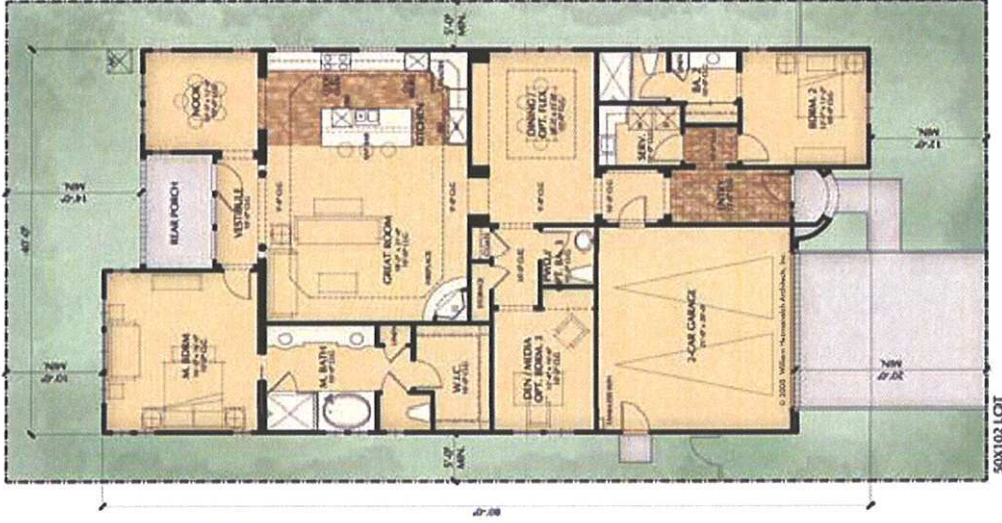




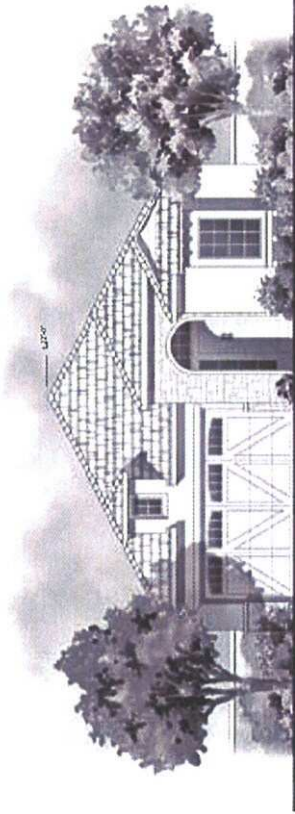
Dressing/ Exercise Room Opt. at Den



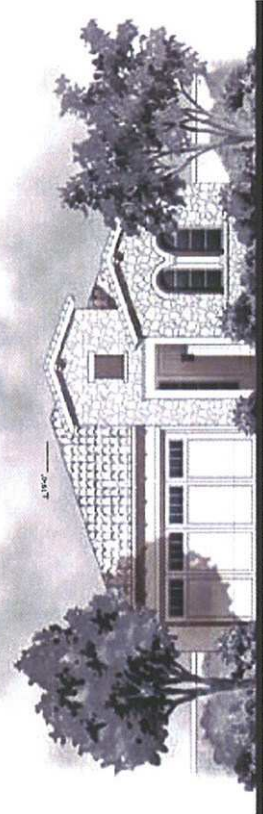
Bedroom 3 Opt. at Den



**RESIDENCE THREE (B)**  
 APPROX. 2,363 SQUARE FEET  
 2 TO 3 BEDROOMS | 3.5 BATHS | DEN/MEDIA | RETREAT  
 OPTIONAL BEDROOM 3 AT DEN | FLEX SPACE AT DINING  
 2-CAR GARAGE



COTTAGE - C  
 FRONT ELEVATION



TUSCAN - A  
 FRONT ELEVATION

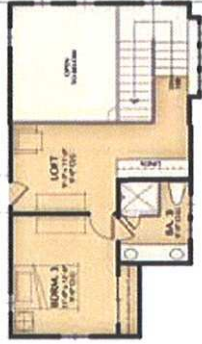


MEDITERRANEAN - B  
 FRONT ELEVATION

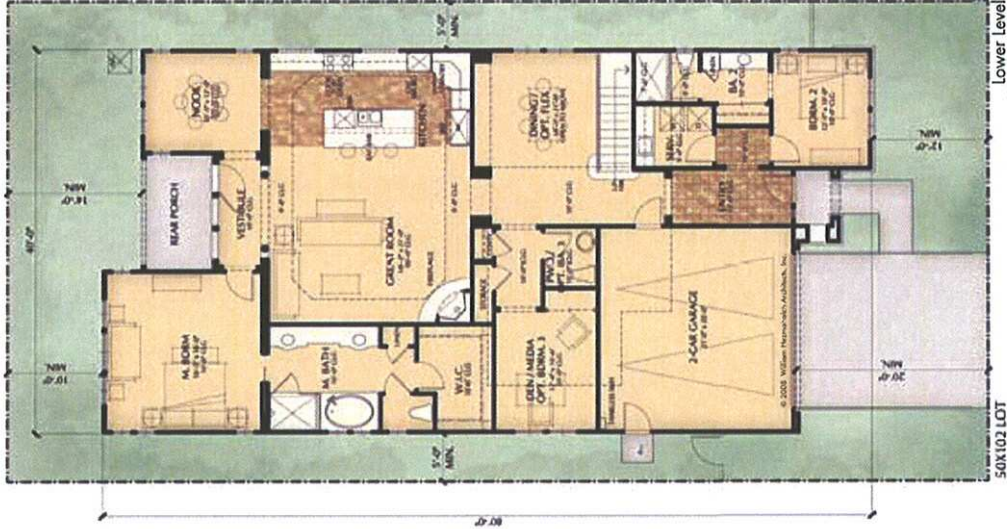
**RESIDENCE THREE—PRELIMINARY FLOOR PLAN & ELEVATIONS**



Super Loft Option  
± 144 Sq. Ft.

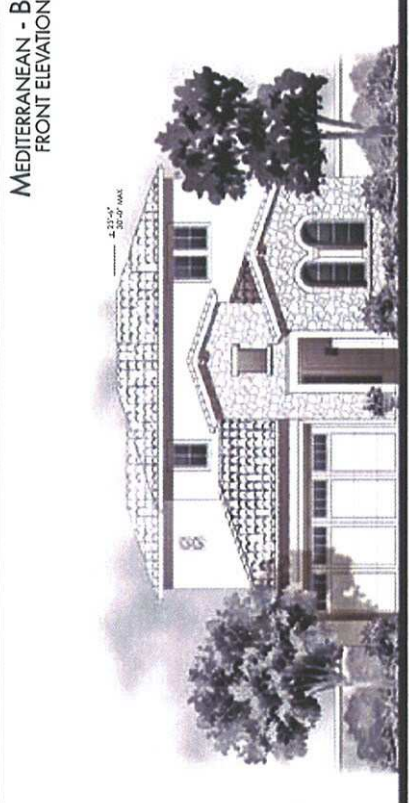
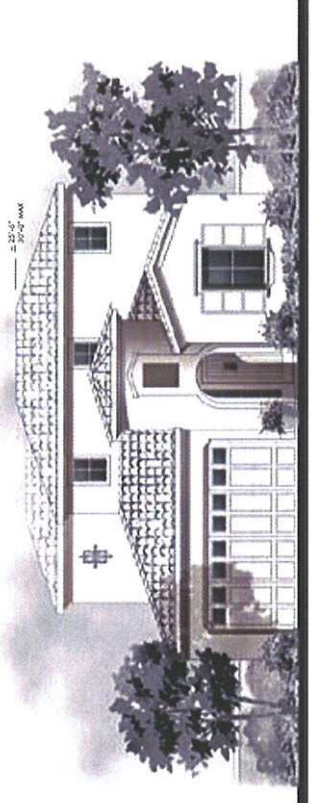


Upper Level - 413 Sq. Ft.

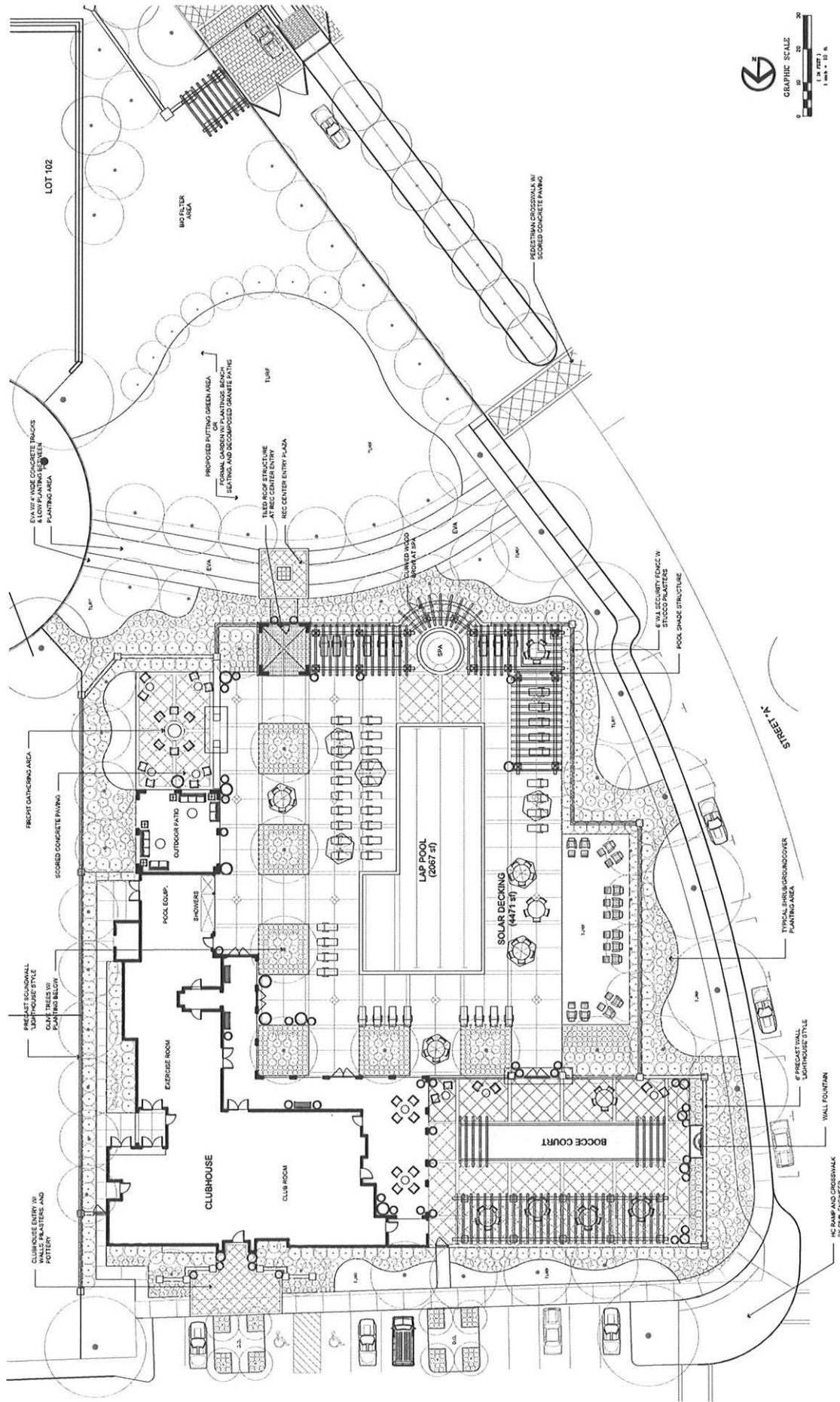


**RESIDENCE FOUR (D)**  
 APPROX. 2,776 TO 2,920 SQUARE FEET  
 3 BEDROOMS | 3.5 BATHS | DEN/MEDIA | LOFT | RETREAT  
 OPTIONAL SUPER LOFT | BEDROOM 4 AT DEN  
 2-CAR GARAGE

Note: See Plan 3 For  
 Dressing/ Exercise Room Option At Den



# RESIDENCE FOUR—PRELIMINARY FLOOR PLAN & ELEVATIONS



# RECREATION CENTER PRELIMINARY LANDSCAPE PLAN

Preliminary, subject to change. Ponderosa Homes is a licensed California real estate broker, license #01257567 REALTOR®.